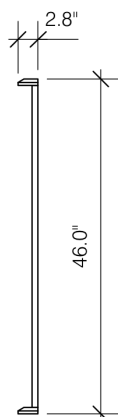


FRONT VIEW

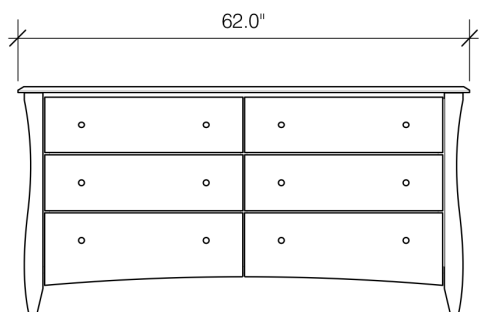


SIDE VIEW

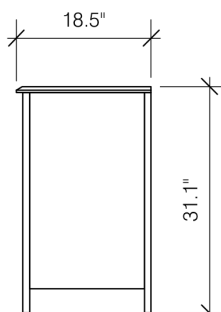
**\*\*Note: 6 Drawer Dresser and Mirror Sold separately**

**Clove 6 Drawer Mirror**

	Box H	Box W	Box L	Cubes	Net Wt.	Gr. Wt.
CM-CLO-6A-	100mm	1200mm	1260mm	0.151m3	16.0Kg	18.0Kg
	3.9"	47.2"	49.6"	5.34cuft	35.3lb	39.7lb



FRONT VIEW



SIDE VIEW

**Clove 6 Drawer Dresser**

	Box H	Box W	Box L	Cubes	Net Wt.	Gr. Wt.
CD-CLO-6A-	840mm	520mm	1620mm	0.708m3	67.5Kg	68.5Kg
	33.1"	20.5"	63.8"	24.99cuft	148.8lb	151.0lb

**Assembled Product and Carton Dimensions\***

*\*Please Note The Above Weights and Measures may be subject to change without notice.*